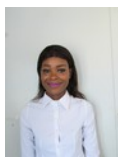




3 Bedroom Freestanding For Sale in Ivydale AH



Mahlatse Theka
0714425930
mahlatse@ltpproperties.co.za

Contact Head Office

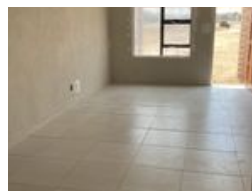
012 664 0096

BYLS BRIDGE OFFICE PARK, NEXT TO IRENE LINK SHOPPING CENTRE,

BUILDING 14 (SEFA BUILDING) (ERF 3084),
BLOCK D, UNIT GF01B, 11 BYLS BRIDGE BOULEVARD, HIGHVELD EXT 73, CENTURION, 0157



Web Ref RL9



R1,370,000

3 2.5 1

Monthly Bond Repayment R14,140.98
Calculated over 20 years at 11% with no deposit.

Transfer Costs R39,717.00 **Bond Costs** R27,105.00

These calculations are only a guide. Please ask your conveyancer for exact calculations.

Monthly Levy R800 **Monthly Rates** R420

Full Title houses in a Secured Estate in Ivydale.

Luxury living awaits at Ivy Royale Manor from the moment you drive through the secured estate.

3 Bedrooms, 2.5 Bathroom units available.

No bond and transfer costs.

24/7 security.

Beautiful kids play area.

Modern finishes

Spacious rooms.

Fibre Optic Cabling.

Granite kitchen tops.

Features

Interior

Bedrooms	3
Bathrooms	2.5
Kitchens	1
Recep. Rooms	2
Furnished	No

Exterior

Garages	1
Security	Yes
Pool	No
Views	No

Sizes

Floor Size	122m ²
Land Size	547m ²