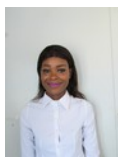




3 Bedroom Freestanding For Sale in Ivydale AH



Mahlatse Theka
0714425930
mahlatse@ltcproperties.co.za

Contact Head Office

012 664 0096

BYLS BRIDGE OFFICE PARK, NEXT TO IRENE LINK SHOPPING CENTRE,

BUILDING 14 (SEFA BUILDING) (ERF 3084),
BLOCK D, UNIT GF01B, 11 BYLS BRIDGE BOULEVARD, HIGHVELD EXT 73, CENTURION, 0157



Web Ref RL7



R1,170,000

3 2 1

Monthly Bond Repayment R12,076.60
Calculated over 20 years at 11% with no deposit.

Transfer Costs R32,749.00 **Bond Costs** R25,220.00

These calculations are only a guide. Please ask your conveyancer for exact calculations.

Monthly Levy R800 **Monthly Rates** R420

New Development for sale in Ivydale. No bond and transfer costs

Take advantage of this spacious 3 bed, 2 bath unit in a security complex.

All costs included. Enjoy all the comforts of modern living at a remarkable price.

Ivy Royale Manor is located close to the N1 and two Primary Schools.

With 24hr security, you can rest easy that you and your loved ones are safe.

Located near great restaurants and major roadways unwinding with loved ones or getting to work is more convenient than ever.

Book an appointment to view our showroom and speak to our friendly agent today.

Features

Interior		Exterior		Sizes	
Bedrooms	3	Garages	1	Floor Size	116m ²
Bathrooms	2	Security	Yes	Land Size	420m ²
Kitchens	1	Pool	No		
Recep. Rooms	2	Views	No		
Furnished	No				