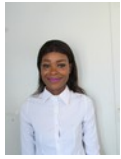




3 Bedroom Freestanding For Sale in Ivydale AH



Mahlatse Theka
0714425930
mahlatse@ltpproperties.co.za

Contact Head Office

012 664 0096

BYLS BRIDGE OFFICE PARK, NEXT TO IRENE LINK SHOPPING CENTRE,

BUILDING 14 (SEFA BUILDING) (ERF 3084),
BLOCK D, UNIT GF01B, 11 BYLS BRIDGE BOULEVARD, HIGHVELD EXT 73, CENTURION, 0157



Web Ref RL17



R1,170,000

3 2 1

Monthly Bond Repayment R12,076.60
Calculated over 20 years at 11% with no deposit.

Transfer Costs R32,749.00 **Bond Costs** R25,220.00

These calculations are only a guide. Please ask your conveyancer for exact calculations.

Monthly Levy R750 **Monthly Rates** R420

New Development, in a Secured Estate in Ivydale

No bond and transfer costs.

3 Bedroom, 2 bathroom house.

24/7 secured estate.

Single automated garage that has straight access to the house.

Prepaid water and electricity.

Beautiful kids play area.

Modern finishes

Spacious rooms.

Fibre Optic Cabling.

Features

Interior

Bedrooms	3
Bathrooms	2
Kitchens	1
Recep. Rooms	2
Furnished	No

Exterior

Garages	1
Security	Yes
Pool	No

Sizes

Floor Size	117m ²
Land Size	340m ²